



SIMPLE LIFE



SIMPLE LIFE



## Baytree Lane, Middleton, M24

£1,195 PCM

Welcome to Simple Life's Baytree Lane homes. Baytree Lane is located close to nearby convenience stores, as well as being within easy reach of Middleton town centre which offers a wider range of shops and supermarkets. The local train station Mills Hill which is within a few minutes' walk of the site, has good links to Manchester and other neighbouring towns. The M60 is a 5 minute drive away giving easy access to the rest of Greater Manchester.

The welcoming central hallway of the Grantham sits in between the living room and the kitchen. A house designed with you in mind, the spacious lounge provides the perfect area to relax, whilst the dining/kitchen area provides a great place to spend time and entertain with its French windows opening on to the garden. A WC is conveniently situated off the hallway, completing the downstairs.

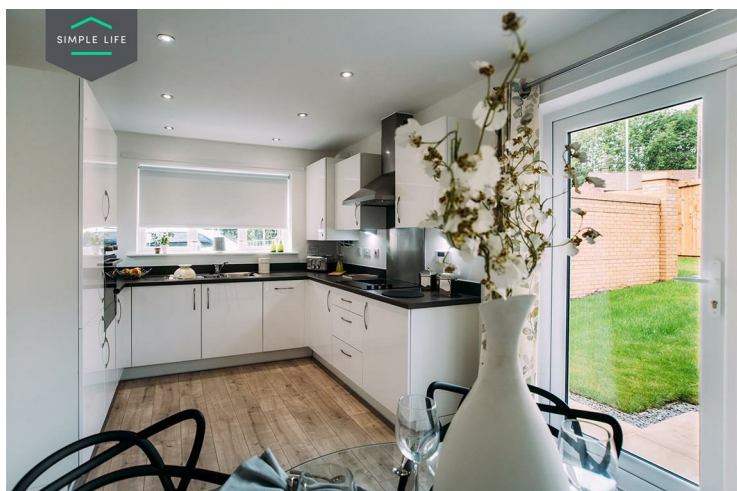
Upstairs, the house has a large master bedroom with fitted, mirrored wardrobes, and a further two bedrooms. A stylish family bathroom with a separate bath and shower provides the best of both worlds, whilst a storeroom on the landing provides a space to store bits and pieces.

The area is also close to two primary schools rated 'Good' and 'Outstanding' by Ofsted.

Deposit: £1370  
Unfurnished  
Council tax: C  
Available 8th July 2024







## Key Features

- Private driveway
- Fitted wardrobes to master bedroom
- Fridge freezer
- Oven and hob
- Dark ash style worktops
- Security alarm system
- Dishwasher
- Washing/drying machine
- Light wash wood effect flooring
- Modern, white kitchen units

## Location

